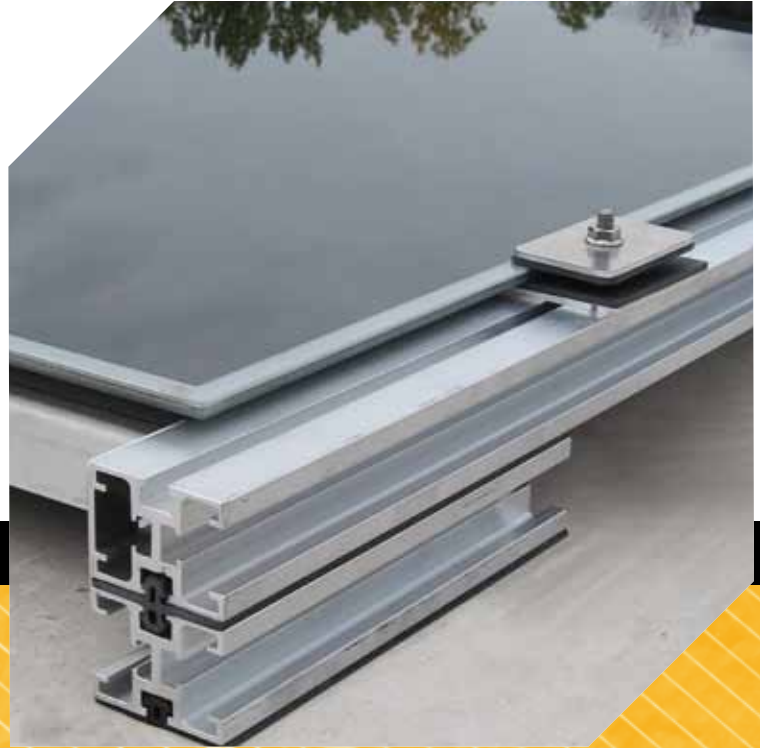


**POWER GRID™**  
Non-penetrating Flat Roof  
Mounting System  
for Maximum Module Density



-  COMMUNICATIONS
-  ENERGY
-  SPECIAL INDUSTRIES
-  SOLAR

 **POWER-FAB®**  
Quality Hardware for the PV Industry



# The POWER GRID™ PV Solar Mounting System



## Key Benefits

- Increased module density
- Fast installation times
- Roof layout design flexibility
- Full scale wind tunnel qualification
- Reduced overall installation costs

The high density POWER GRID top-clamping module system is designed to install fast and provide a secure mounting structure for frameless thin film or framed crystalline modules. Qualified test results from a full scale wind tunnel facility support designs that require less ballast weight and no roof penetrations for most site applications.

A unique modular rail concept provides the flexibility to design and install the grid mounting structure around roof obstructions and avoid shaded areas.

The POWER GRID system utilizes high strength rails with integrated wiring channels and pre-installed EPDM material to protect the roof surface. Bolt-on spacer bars provide precise rail alignment and eliminate any field cutting or measuring. A one-piece module clamp with positive stop and gasket securely mounts and protects thin film modules from damage. High strength stainless steel clamps secure framed modules. Pre-assembled mounting rails and fewer hardware components greatly reduce on site assembly thus saving both valuable time and costs on every roof installation.



## Faster Installation Time – Reduced Labor Costs

Installers prefer a racking system engineered to install quickly, requiring fewer components to manage on the roof and assembles hassle-free.

- Pre-assembled module rail options
- Single tool
- Precision spacer bars eliminate measuring and chalk lines
- “Set down” fast module assembly
- Top access module clamps
- EPDM protection factory installed – no additional mats required



Made in the USA

## Installs in 4 Simple Steps

with only 3 hardware components

- 1 Distribute **Module Rails** on the roof
- 2 Install **Spacer Bars** between rails – no measuring or cutting required
- 3 Lay down Solar Modules
- 4 Install top access **Module Clamp**

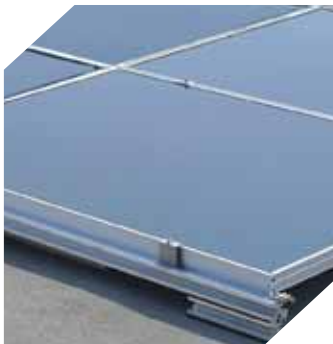


Full Scale Wind Tunnel Tested and Qualified

## High Strength – Long Lasting Design

System Owners and Specification Engineers demand a reliable mounting system designed to withstand environmental conditions for the life of the PV module.

- Full scale wind tunnel qualified
- Corrosion resistant aluminum components
- EPDM protection for roof surfaces
- Stainless steel fasteners
- Unimpeded water drainage
- Grid-work of interconnected high strength rails



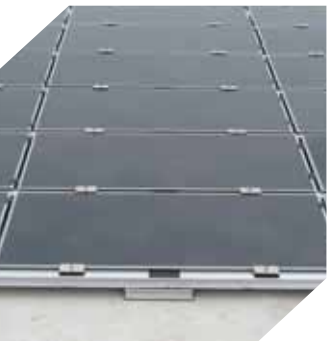
Clamps for framed or unframed modules

## Flexibility

Engineers and Architects require a mounting system that offers flexibility in design and application while exceeding building code requirements.

- UL listed materials
- Configurable around roof obstacles
- Compatible with framed or unframed modules
- Integrated grounding system option
- Optional ballast pans for higher speed wind zones
- Penetration options for seismic regions or reducing ballast loads
- Adjustable mounting feet for loading over structural members

Patent Pending

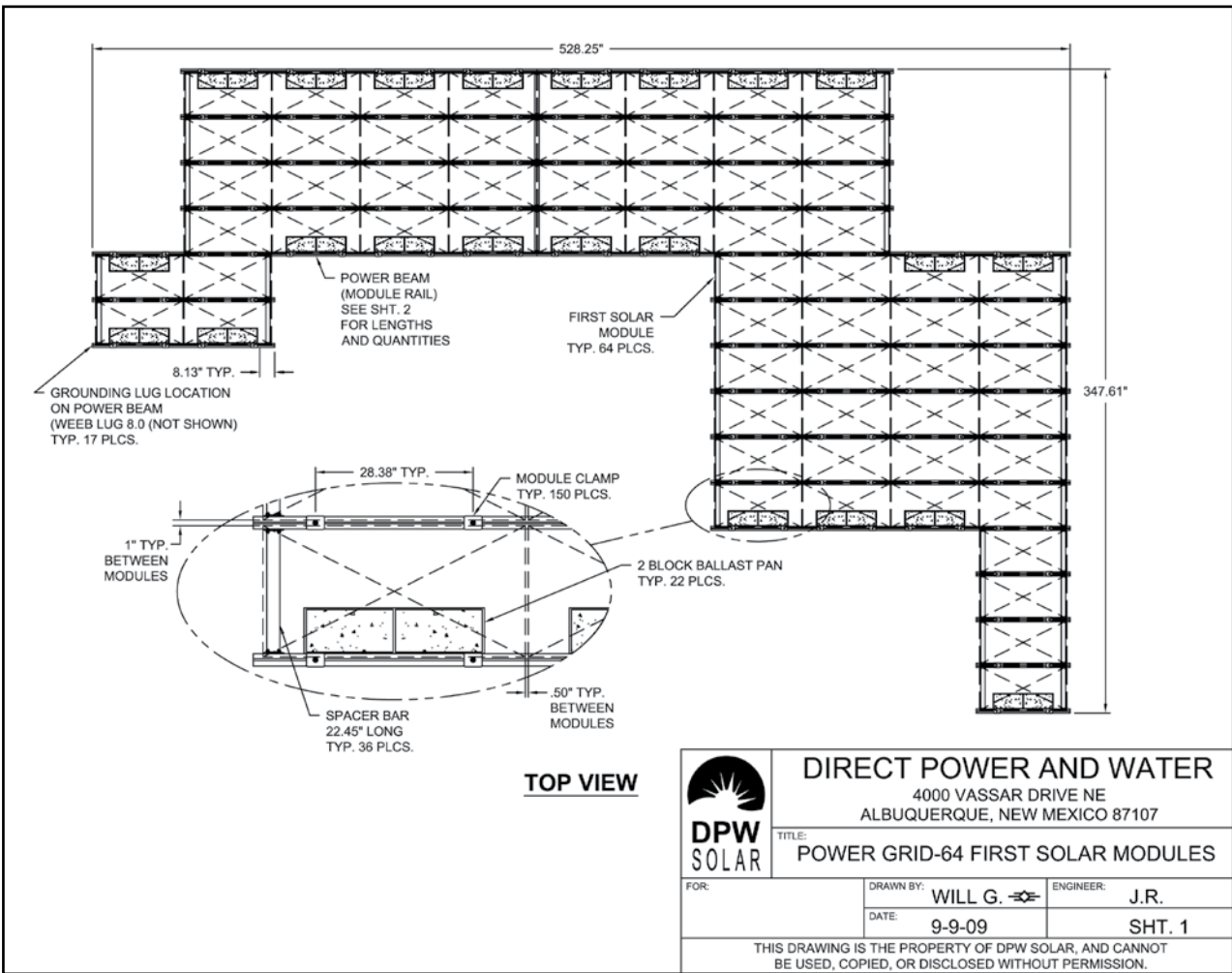


---

**Our engineering staff is available to assist with your next project. Please provide module type, design wind speed, exposure category and building roof layout and height information.**

---

# Sample Roof Layout



The POWER GRID™ System is adaptable to any roof layout.



4000-B Vassar Drive NE  
Albuquerque, New Mexico 87107  
USA

Telephone: 800.260.3792  
Fax: 505.889.3548  
Web Site: [www.DPWSolar.com](http://www.DPWSolar.com)  
E-mail: [info@power-fab.com](mailto:info@power-fab.com)

© 2012 Preformed Line Products  
Printed in U.S.A.  
SL-SS-1066-2  
01.12.1M