

## Ballasted Power Rail™

Non-Penetrating Flat Roof Mounting System  
for Framed Modules



 COMMUNICATIONS    ENERGY    SPECIAL INDUSTRIES    SOLAR

 **POWER-FAB**®  
Quality Hardware for the PV Industry



# The Ballasted Power Rail™ PV Solar Mounting System



Increased module density

## Key Benefits

- 0° Tilt allows for increased module density
- Fast installation times
- Roof layout design flexibility
- Full scale wind tunnel qualification
- Reduced overall installation costs

The high density Ballasted Power Rail top-clamping module system is designed to install fast and provide a secure mounting structure for framed crystalline modules. Qualified test results from a full scale wind tunnel facility support designs that require less ballast weight and no roof penetrations for most site applications.



Wire management



Simple layout



Fast Top-Down clamping

A unique modular concept provides the flexibility to design and install the grid mounting structure around roof obstructions and avoid shaded areas.

The Ballasted Power Rail system utilizes high strength rails with integrated wiring channels and pre-installed EPDM material to protect the roof surface. Ballast pans provide precise rail alignment. High strength stainless steel clamps secure most framed modules. The top-clamping rail utilizes a single tool with a revolutionary RAD™ fastener for faster bolt placement. The unique shape of the RAD provides an anti-rotation feature locking the bolt in the proper orientation when installed.

## Faster Installation Time – Reduced Labor Costs

Installers prefer a racking system engineered to install quickly, while requiring fewer components to manage on the roof and ultimately assemble hassle-free.

- Single tool
- Precision ballast pans double as rail spacer members and eliminate measuring
- “Set down” fast module assembly
- Top access module clamps – RAD option
- EPDM protection factory installed – no additional mats required
- Compatible with Wiley WEEBS for integral grounding

## Installs in 4 Simple Steps

with only 3 hardware components

- 1 Distribute **Module Rails** on the roof
- 2 Install **Ballast Pans** between rails – no measuring or cutting required
- 3 Lay down Solar Modules
- 4 Install top access **Module Clamp**

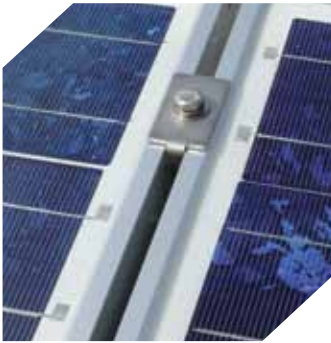


Full Scale Wind Tunnel Tested and Qualified

## High Strength – Long Lasting Construction

System Owners demand a field proven, reliable mounting system designed to withstand environmental conditions for the life of the PV module.

- Full scale wind tunnel qualified
- Corrosion resistant aluminum components
- EPDM protection for roof surfaces
- Stainless steel fasteners
- Unimpeded water drainage



Industry's tightest inter-module spacing

## Design Flexibility

Engineers and Architects require a mounting system that offers flexibility in design and application while exceeding building code requirements.

- Configurable around roof obstacles
- Compatible with most framed modules
- Penetration options for seismic regions or reducing ballast loads
- Slotted Ballast Pans for flexibility over roof undulations

Patent Pending



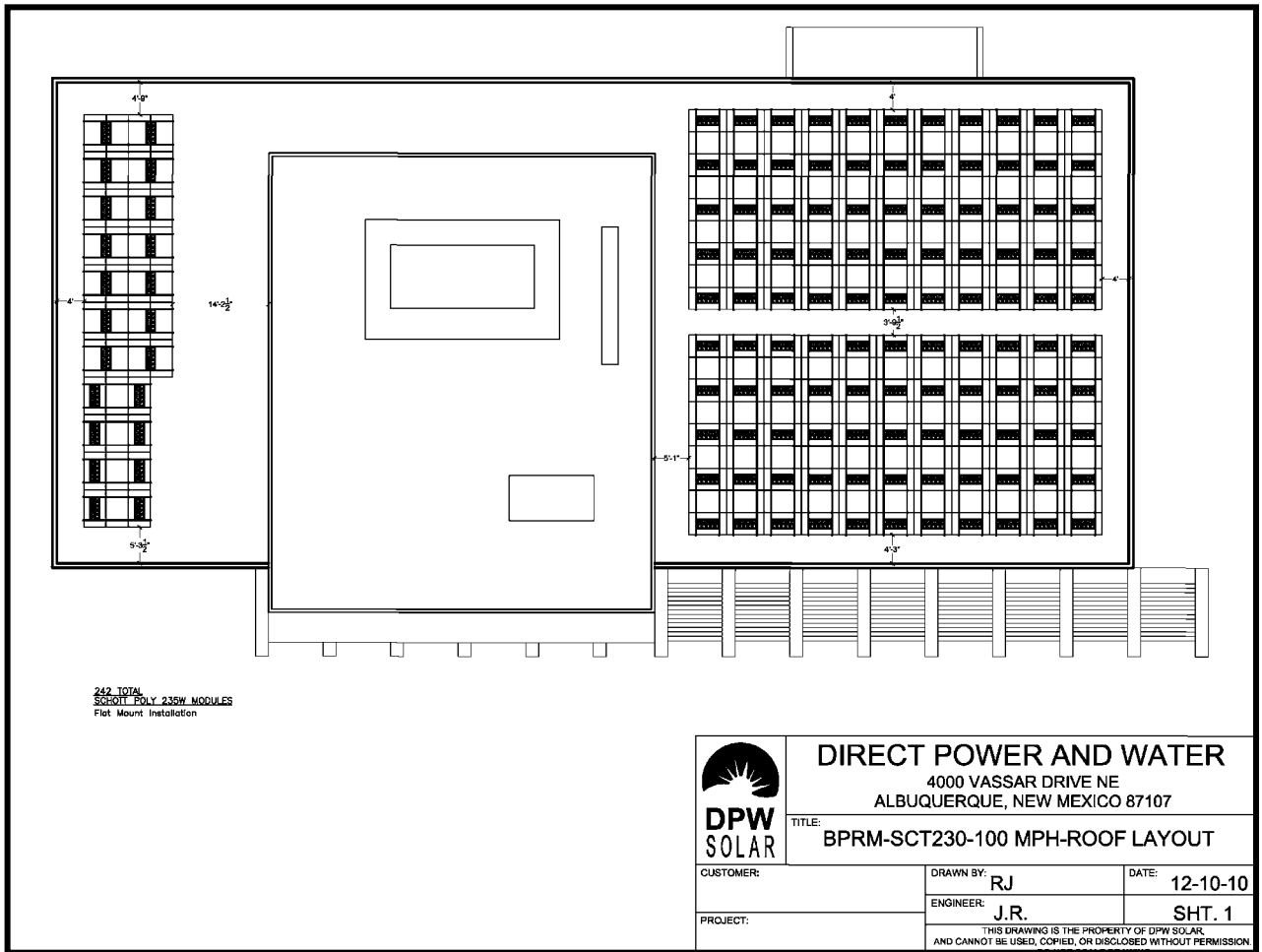
Configurable around roof obstructions

---

**Our engineering staff is available to assist with your next project. Please provide module type, design wind speed, exposure category and building roof layout and height information.**

---

# Sample Roof Layout



The Ballasted Power Rail™ System is adaptable to any roof layout.



4000-B Vassar Drive NE  
Albuquerque, New Mexico 87107  
USA

Telephone: 800.260.3792  
Fax: 505.889.3548  
Web Site: [www.DPWSolar.com](http://www.DPWSolar.com)  
E-mail: [info@power-fab.com](mailto:info@power-fab.com)

© 2011 Preformed Line Products  
Printed in U.S.A.  
SL-SS-1085-1  
06.11.00